



The Nora Tank

Confident Beginner | Woven Tank Pattern

sizes 0-16

@sewbakemake patterns | 2021 | For personal home sewing use only

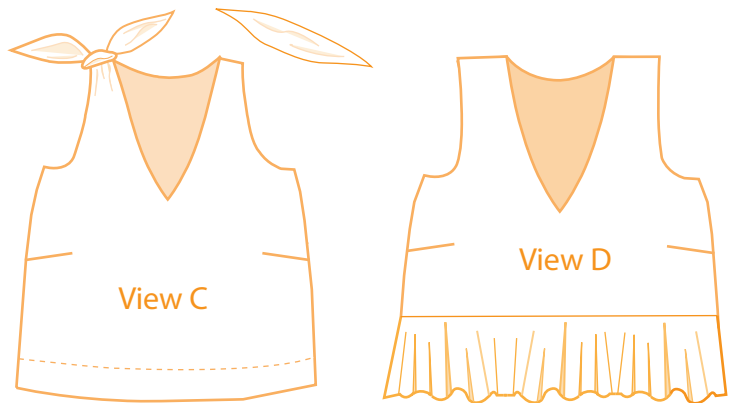
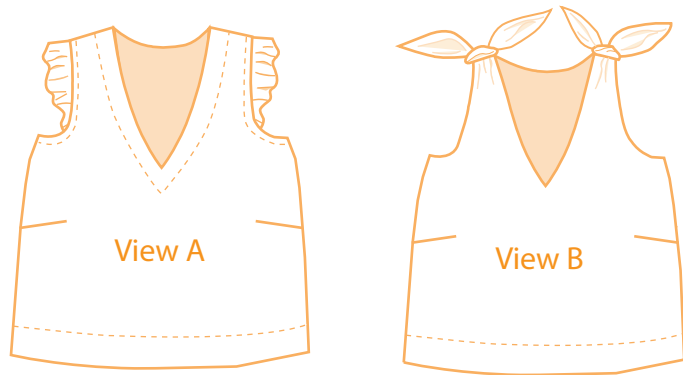
Description

The Nora Tank is a breezy feminine top featuring a deep V neck with multiple views for customization! It is easy to wear and a staple summer wardrobe piece.

It is endlessly hackable, and quick to put together.

View A features a ruffle sleeve, View B features self tie straps, View C features removable ties and View D features a peplum ruffle.

You can customize the length as you like as well! There are 3 lengths to choose from for Views A, B and C- Petite Crop, Regular Crop and Full Length, which hits at the hip.



Recommended Fabrics:

This top is designed for light to medium weight woven fabrics. Fabrics that would work well include: linen, cotton, and linen blends. You can also make it in a fabric with more drape, such as tencel, rayon or viscose, which will result in a more floaty look!

Notions:

- matching thread
- universal needle
- lightweight interfacing (optional)

Sewing Techniques:

- sewing a facing
- burrito method
- bias bound armholes
- sewing gathers
- understitching

Seam allowance is included in this pattern and is 3/8" or 1cm

Size Chart

This pattern is drafted for someone who is 5'5 and a B cup.

inches

Body Measurements	0	2	4	6	8	10	12	14	16
Upper Bust	28	30	32	34	36	38	41	44	47
Bust	30	32	34	36	38	40	43	46	49
Waist	23	25	27	29	31	33	36	39	42
Hip	33	35	37	39	41	43	46	49	51

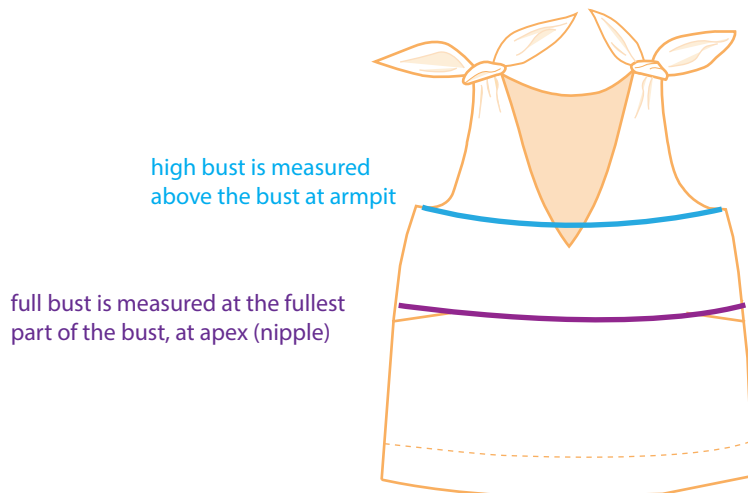
centimetres

Body Measurements	0	2	4	6	8	10	12	14	16
Upper Bust	71.1	76.2	81.3	86.4	91.5	96.6	104.1	111.8	119.4
Bust	76.2	81.3	86.4	91.5	96.6	101.6	109.2	116.8	124.5
Waist	58.4	63.5	68.8	74	78.8	83.9	91.4	99	106.7
Hip	83.9	88.9	94	99	104.2	109.3	116.8	124.5	129.5

How to Choose your size:

Take your measurements using a soft measuring tape. Make sure to keep the measuring tape parallel to the floor. Hold the measuring tape taught, but not too tight while taking measurements.

If your measurements span a few sizes, choose your size based on your full bust measurement. This top is drafted for a B cup, but has ample ease. If you are larger than a C cup, I would recommend doing a Full Bust Adjustment.



Fabric Requirements

yards

	0	2	4	6	8	10	12	14	16
View A - 45"	1 3/4	1 3/4	1 3/4	1 3/4	1 3/4	1 3/4	1 3/4	1 3/4	1 3/4
View A - 54"	1 1/4	1 1/4	1 1/4	1 1/4	1 1/4	1 1/4	1 1/2	1 1/2	1 1/2
View B - 45"	2 1/3	2 1/3	2 1/3	2 1/3	2 1/3	2 1/3	2 1/2	2 1/2	2 1/2
View B - 54"	1 1/2	1 1/2	1 1/2	1 1/2	1 1/2	1 1/2	2 1/4	2 1/4	2 1/4
View C - 45"	1 3/4	1 3/4	1 3/4	1 3/4	1 3/4	1 3/4	1 3/4	1 3/4	1 3/4
View C - 54"	1 1/2	1 1/2	1 1/2	1 1/2	1 1/2	1 1/2	2	2	2
View D - 45"	1 1/2	1 1/2	1 1/2	1 1/2	1 1/2	1 1/2	2	2	2
View D - 54"	1	1	1	1	1	1	1.5	1.5	1.5

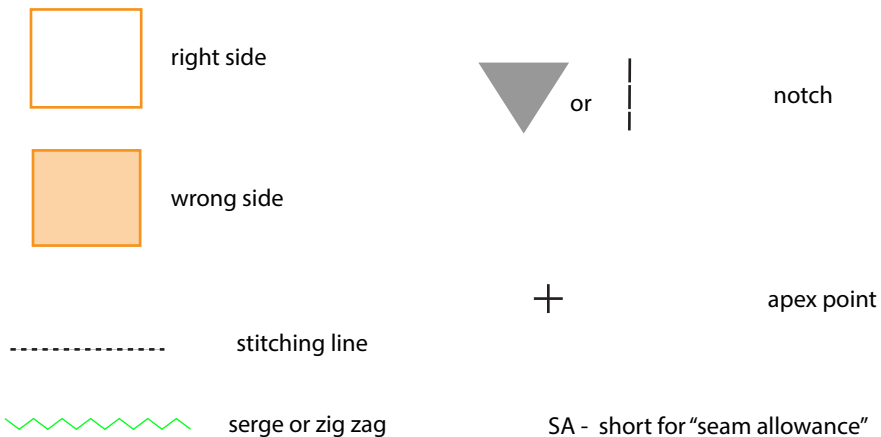
metres

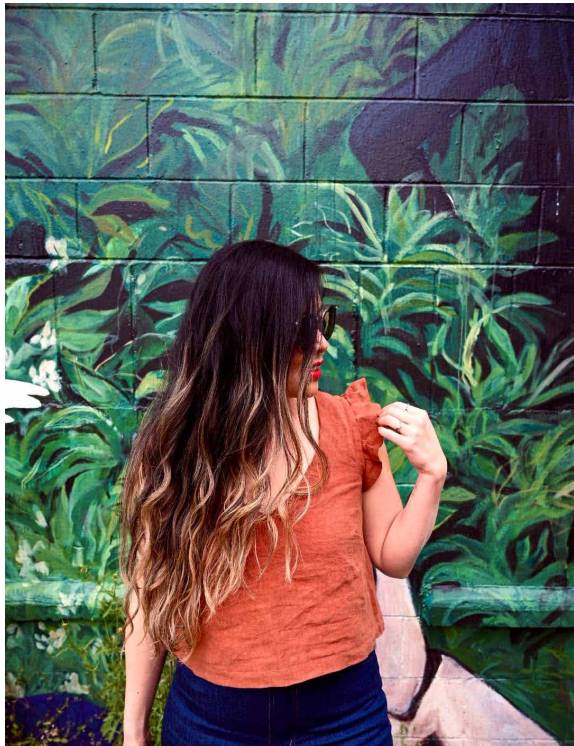
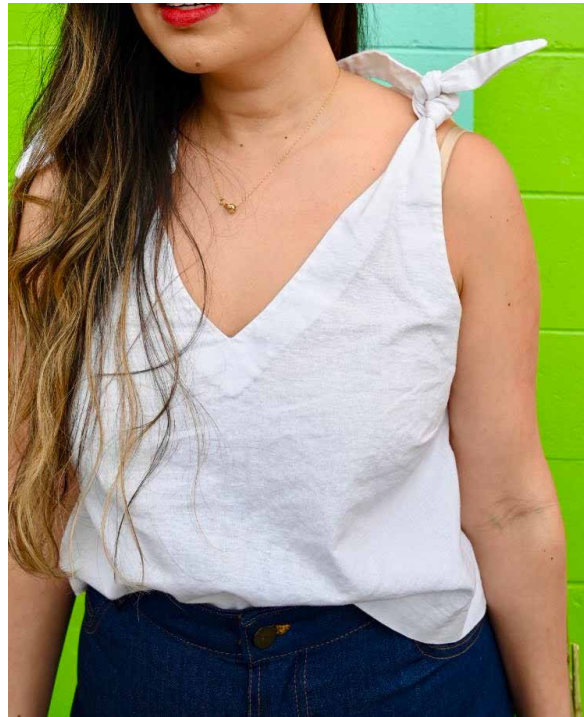
	0	2	4	6	8	10	12	14	16
View A - 45"	1.6	1.6	1.6	1.6	1.6	1.6	1.6	1.6	1.6
View A - 54"	1.2	1.2	1.2	1.2	1.2	1.2	1.4	1.4	1.4
View B - 45"	2.1	2.1	2.1	2.1	2.1	2.1	2.3	2.3	2.3
View B - 54"	1.4	1.4	1.4	1.4	1.4	1.4	2.1	2.1	2.1
View C - 45"	1.6	1.6	1.6	1.6	1.6	1.6	1.6	1.6	1.6
View C - 54"	1.4	1.4	1.4	1.4	1.4	1.4	1.8	1.8	1.8
View D - 45"	1.4	1.4	1.4	1.4	1.4	1.4	1.8	1.8	1.8
View D - 54"	0.9	0.9	0.9	0.9	0.9	0.9	1.5	1.5	1.5

Interfacing is optional, but it will help keep the facing in place, especially if you use a lighter weight fabric. If you choose to use it, you will need 2/3 metre or 2/3 yard of lightweight fusible interfacing for all views and all sizes.

Scrap Busting Tip: If you use a contrast fabric for the facings for Views A, C and D, or the bias tape for View A, you may require less fabric. Additionally, if you use a fabric with a directional print, and wish to pattern match, you may require more fabric.

Legend





Make sure to use the hashtag **#TheNoraTank**, and tag me on instagram **@sewbakemake** so that I can see your makes!